

INTERNATIONAL BACCALAUREATE

BIOLOGY

Subsidiary Level

Paper 1

Tuesday, 8 November 1988 (morning)

45 mins

INSTRUCTIONS

There are 30 questions in this Paper and you should attempt them all.

For each question there are 4 suggested answers. Read each question carefully. When you have selected the answer you consider to be the best, indicate your choice on the answer sheet provided. Choose only one answer for each question.

Your score for this Section will depend on the total number of correct answers you give.

ALL ANSWERS MUST BE GIVEN ON THE SPECIAL ANSWER SHEET

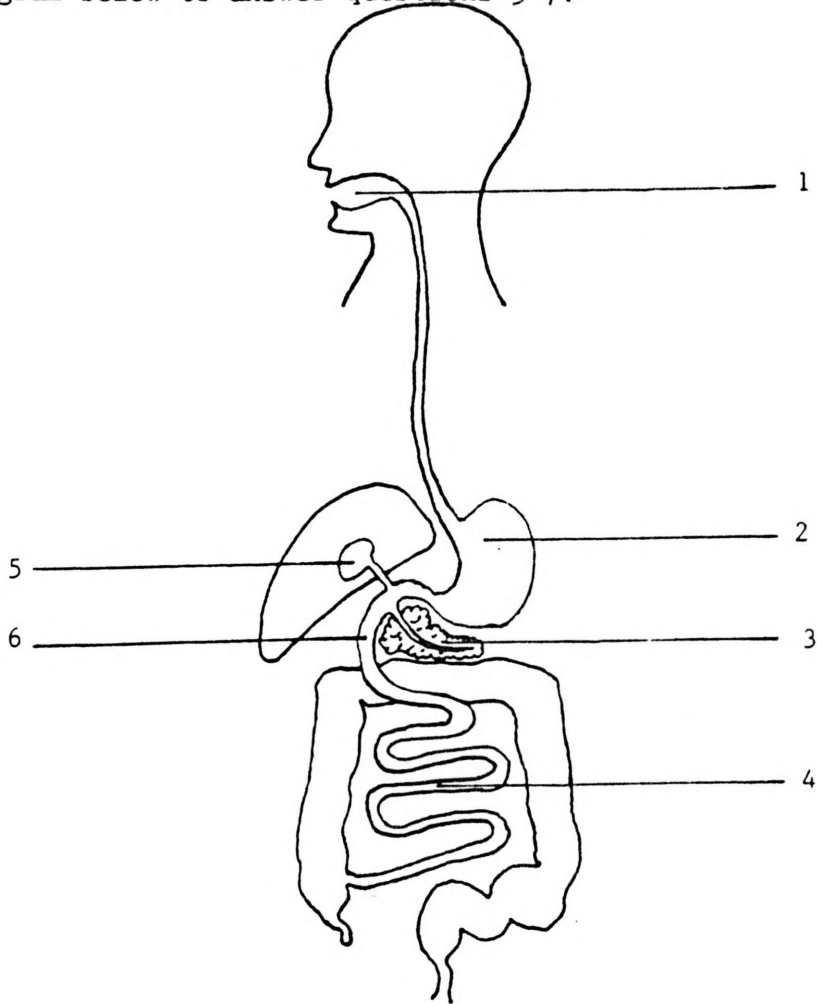
1. How many naturally occurring amino acids are commonly found in plant and animal tissues?
 - A. 4
 - B. 8
 - C. 16
 - D. 20

2. Which of the following statements is always true for carbohydrates?
 - A. They all contain nitrogen.
 - B. They contain twice as many hydrogen atoms as oxygen atoms.
 - C. They contain the same number of hydrogen and oxygen atoms.
 - D. They contain the same number of carbon and oxygen atoms.

3. Which of the following is NOT an end-product of digestion?
 - A. Glucose.
 - B. Fructose.
 - C. Lactose.
 - D. Galactose.

4. Which of the following organs requires vitamin A for its correct functioning?
 - A. The eye.
 - B. The stomach.
 - C. The heart.
 - D. The kidney.

Use the diagram below to answer questions 5-7.



5. The pancreas, gall bladder, duodenum and ileum are labelled respectively
- A. 1, 2, 3, 4
 - B. 3, 4, 5, 6
 - C. 3, 5, 6, 4
 - D. 2, 3, 4, 5